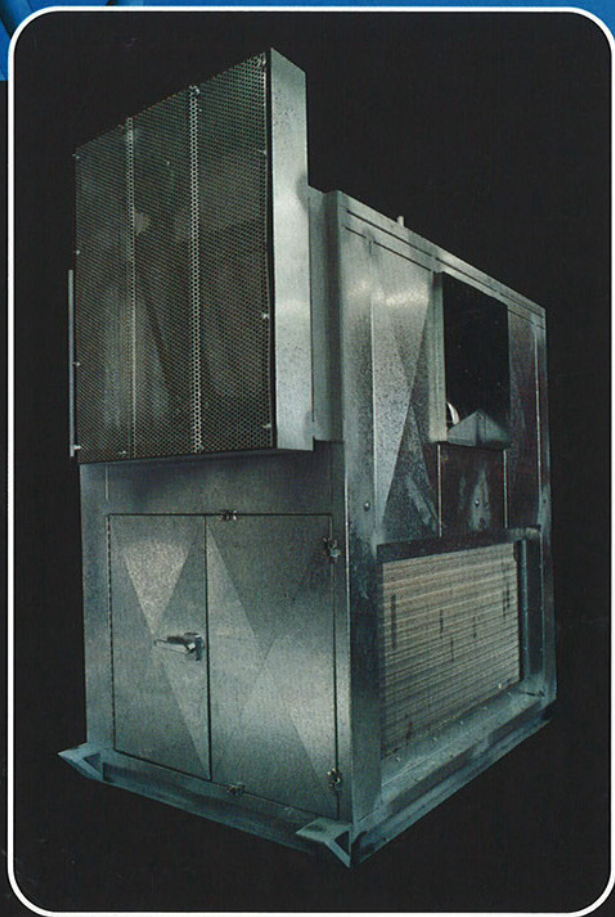


FAN COIL INDUSTRIES



**FAN COIL INDUSTRIES**  
EXCELLENCE IN AIR



Quality Endorsed Company  
ISO 9001 LC399  
Standards Australia

Unit Casing



## UNIT CASING

Continuous galvanised steel to AS 1397 G2 coating class Z275 formed with double folds and cross breaks to provide strong vibration free assemblies. Mig welded joints without external flanges. Insulation is 50mm thick medium density fibreglass (32Kg/m<sup>3</sup>).

Internal lining is minimum 0.8mm galvabond. Rivetted and sealed to provide a flat clean surface without exposed insulation or air gaps.

Seal all penetrations in an approved method (refer coil and fan details).

Entire casing is supported on galvanised channel base frames units up to 4,000L/S 75x38 channel – over 4,000L/S 100x50 channel.

## FANS

All fans are centrifugal mounted on solid mild steel shafts precision ground to G6 tolerance. Forward curved blades will be used on all units.

All bearings will be mounted on the outside of the unit casings. Self aligning ball type with taper adaptor sleeve and pillow block housing or double row roller bearings in plummer block housings.

Bearings have shaft seals at unit casing. Bearings are mounted on substantial angle framing to provide correct support for fan, shaft and drive. Belt guards are fitted on all units.

## COILS

Seamless copper tubes expanded into continuous rippled aluminium fins suitable for working pressures up to 1050kpa and factory tested to 2000kpa in water.

Seals around coil connections where they pass through the casing will be airtight.

## CONDENSATE TRAY

Each cooling coil has a 0.9mm 304 grade B2 finish stainless steel drain tray. Tray is fabricated with an in-built slope to the drain connection point. Tray is insulated with 25mm polystyrene foam.

Fans



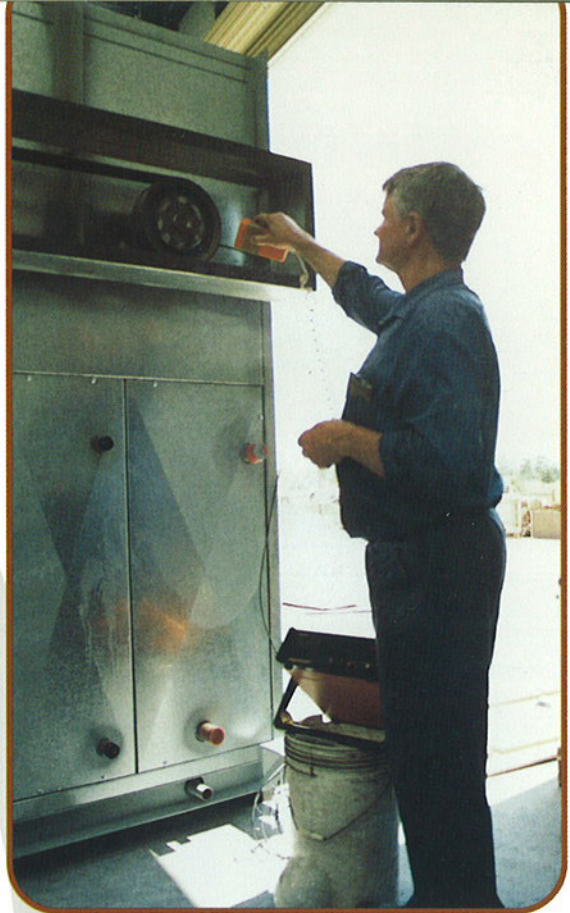
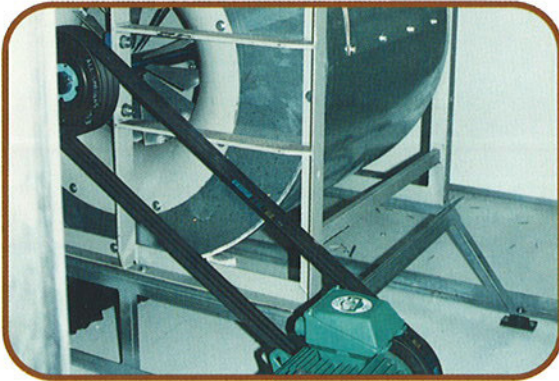
Coils & Condensate Tray



## MOTORS

All motors are 3 phase T.E.F.C. with IP55 protection suitable for use with variable speed drives. Metric frames and foot mounted on adjustable slide rails.

*Motors*



## DRIVES

Vee belt drive are external using cast iron taper lock pulleys and S.P. section belts.

Up to 0.75 KW motor use 1 x SPA  
1.1 to 4.0 KW motor use 2 x SPA  
5.5 to 9.0 KW motor use 3 x SPA  
11.0 to 15.0 KW motor use 2 x SPB  
Above 15.0 KW refer F.C.I.

*Drives*



## ACCESS

All units have one hinged and double sided latched access panel operable from both sides. Doors seal against EDPM/soft sponge rubber self gripping seal. Screw panels are used to allow removal of all internal components (if required).

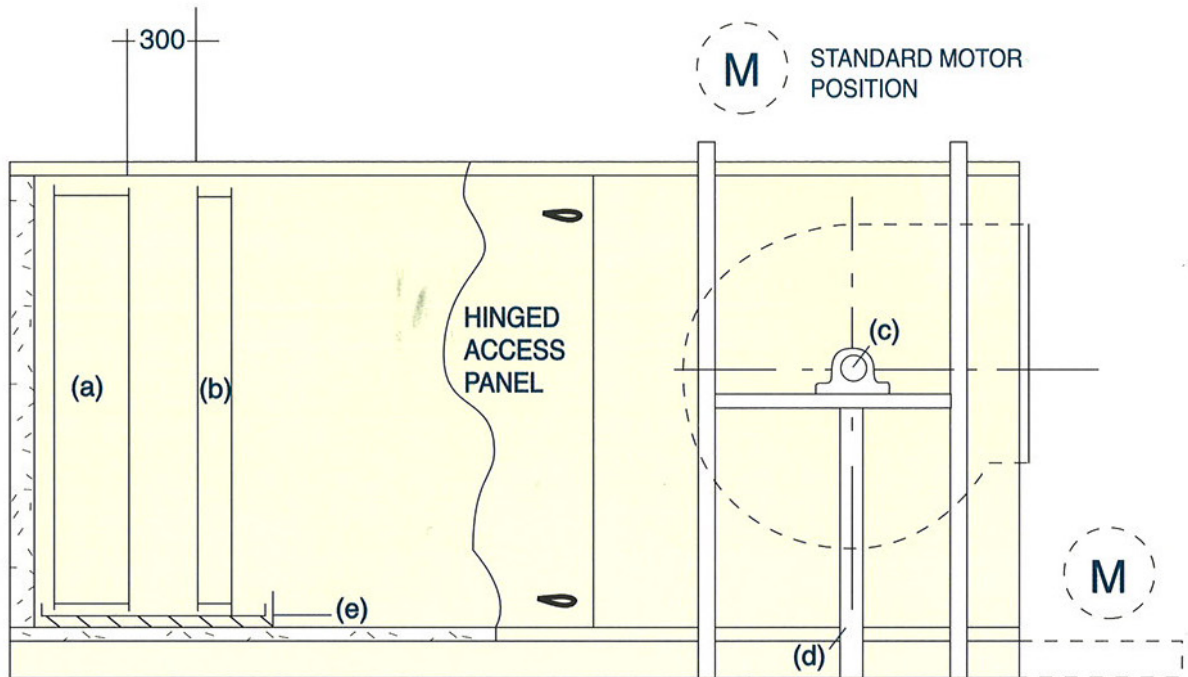
## GENERAL NOTES

- A gap of 300mm (min.) is provided between cooling and heating coils to allow access to both sides of coils.
- All sealer used is food grade Hilastic 66 (refer separate information).
- All units come with optional out-riggers to allow spring mounting without increasing overall unit height.

*Access*



# TYPICAL ARRANGEMENT FOR EXTERNAL MOTOR AIR HANDLER



 50mm FIBREGLASS OR ROCKWOOL

 25mm POLYSTYRENE FOAM

OPTIONAL  
MOTOR POSITION  
WITH EXTENDED  
BASE FRAME



Quality  
Endorsed  
Company  
ISO 9000 LIC999  
Standards Australia

(a) CHILLED WATER COOLING COIL

(b) HOT WATER HEATING COIL

(c) PILLOW BLOCK BEARINGS

(d) ANGLE (DURAGAL)  
FRAME FULL HEIGHT  
AND WIDTH OF UNIT  
TO ENSURE  
STRUCTURAL RIGIDITY

(e) STAINLESS STEEL DRAIN TRAY



## FAN COIL INDUSTRIES PTY LTD

ACN 002 739 320

No. 16 Orierton Road Narellan PO Box 281 Narellan NSW 2567

Telephone: (02) 4647 6406 Facsimile: (02) 4647 6408 Email: info@fancoil.com.au